

R-7500 Series
Cast Iron Stop Plank Grooves

Sewage Disposal Castings

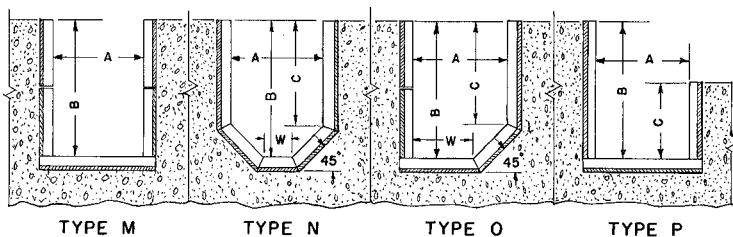
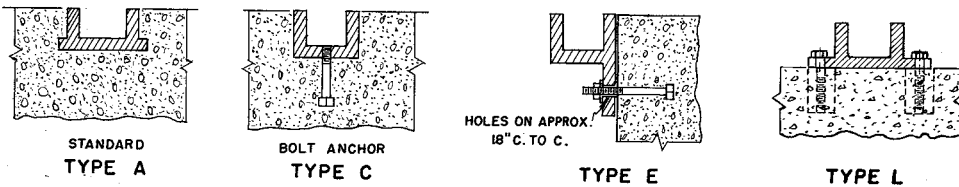
Groove supplied in standard three-foot maximum lengths, with slot dimensions as shown in table. Fractional sections may be obtained to give any overall length required.

Specify when ordering – send details as required:

- Catalog number
- Groove Type
- "Y" and "Z" dimensions
- "A", "B" and "C" dimensions

Catalog No.	Y	Z
R-7500-22	2	2
R-7500-33	3	3
R-7500-44	4	4
R-7500-66	6	6
R-7500-86 *	8	6

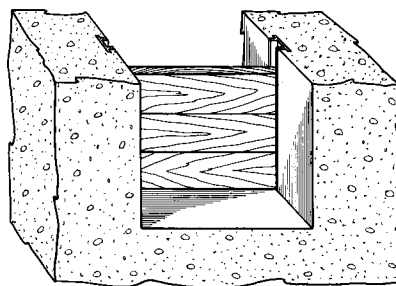
* Not available in Type E.



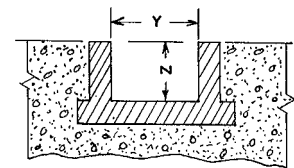
TYPICAL VARIATIONS IN STOP LOG CHANNEL CONST.



Type A or C, Type E, Type L



Typical Channel



SECTION

NOTE: Most "Y" and "Z" dimensions can be furnished interchangeably and are not limited to dimensions opposite each other.